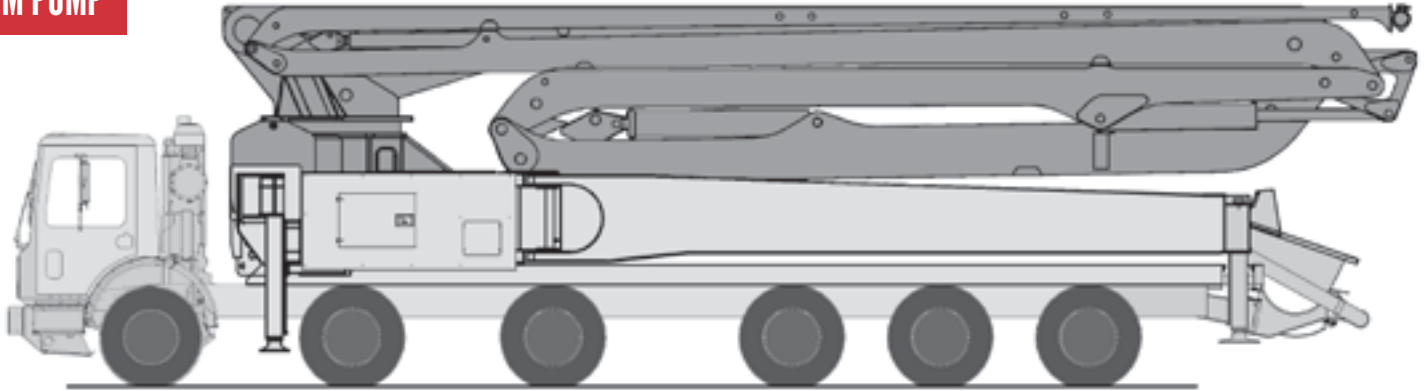




57 METER RZ-FOLD NEW MODEL

5 SECTION X-STYLE

BOOM PUMP



JXRZ 57-5.18*

BOOM SPECIFICATIONS

| | |
|----------------------------|-----------------|
| Vertical Reach | 56.2 m (184'5") |
| Horizontal Reach | 51.2 m (168') |
| Reach from Front - Cabover | 46.8 m (153'7") |
| Unfolding Height | 14.8 m (48'7") |
| 1st Section Length | 11.1 m (36'5") |
| 2nd Section Length | 8.5 m (27'11") |
| 3rd Section Length | 9.0 m (29'6") |
| 4th Section Length | 11.6 m (38'1") |
| 5th Section Length | 12.0 m (39'4") |
| Outrigger | X-Style |
| Front Spread | 9.3 m (30'6") |
| Rear Spread | 12.5 m (41') |

GENERAL SPECIFICATIONS

| | |
|-------------------------------|--|
| Pipe Size (ID) | 125 mm (5") |
| Boom Control Valve | Proportional (by HAWE) |
| Radio Remote: | Dual Wireless Transmitter System |
| Vibrator | Standard |
| Water Pump | Hydraulic Power 20 bar (290 psi) |
| Water Tank | 800 L (211 G) |
| Wear Parts | Carbide |
| Popular Upgrades [†] | LED Boom Light Kit LED Outrigger Lights Heated Water Tank Heated Hydraulic Tank Air-Cuff Twin Wall Pipe 20 cell Pump Kit |

*more options available, ask your sales rep for details.

PUMP SPECIFICATIONS

| | | |
|----------------------------|---|--|
| Output | Rod Side | 181 m ³ /h (235 yd ³ /h) |
| | Piston Side | 122 m ³ /h (159 yd ³ /h) |
| Pressure | Rod Side | 85 bar (1233 psi) |
| | Piston Side | 130 [†] bar (1886 psi) |
| Concrete Cylinder Diameter | 230 mm (9") | |
| Concrete Cylinder Type | Hard Chromed | |
| Stroke Length | 2100 mm (83") | |
| S-Tube Size | 9" X 7" | |
| Main Oil Pump | Rexroth Hydromatic A11VSO260 | |
| Hydraulic System Pressure | 350 bar (5076 psi) | |
| Lube System (Hopper) | Automatic | |
| Switching System | Hydraulic | |
| Hopper Capacity | Easy Clean 600 L (158 G) | |
| Number of Strokes/Min | 34 | |
| Output Control Range | 20(26)~164m ³ /(215yd ³ /h) | |

*Not to be used through boom pipe.

*Contact your sales representative for alternate chassis options.

www.allianceconcretepumps.com



JXRZ 57-5.18

BOOM PUMP

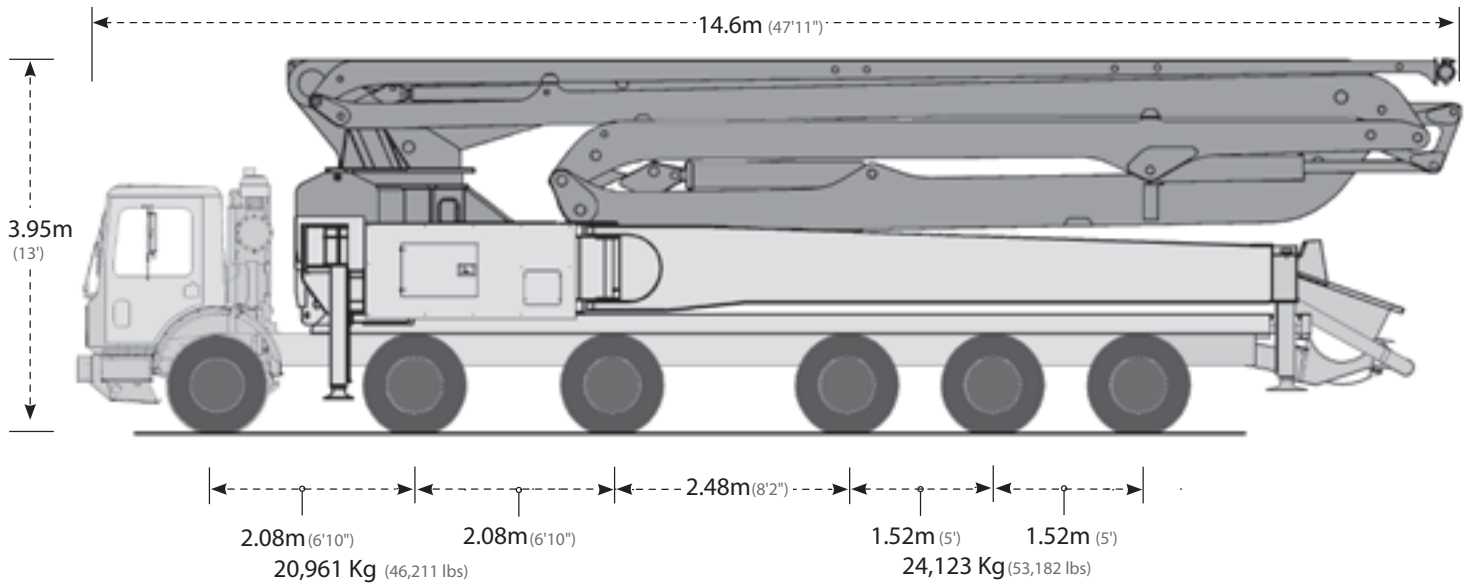


1.888.584.7231



1.888.870.0908

Reach from front : 46.8m (153'7")



DIAGRAMS

